



New Courtyard Garden Planned for Sussex Cottage

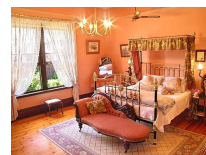
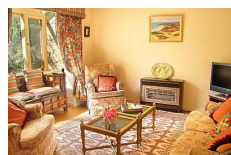
March 2010

After suffering a high degree of tree root damage to existing paving by very invasive self grown trees we have decided to take on a full upgrade to the Northerly facing private courtyard at Sussex Cottage.

This includes removing trees and roots, existing cement block paving, creeper and lowering the paved area for new large Mintaro slate paving, (similar to the Champagne Suite), with thyme in between, Bennett's Pottery edging and 1.2m garden beds all around this lovely large courtyard.

Extensive hedging, standard roses, extra mood lighting, umbrella and designer wrought iron outside furniture will complete the picture! An electric sunbeam barbecue will also be supplied.

This to a large extent will provide an area for privacy or to entertain easily at Historic German Settler Sussex Cottage which is now celebrating its 150th Birthday.



North Adelaide Heritage Group

Owned and Hosted by Rodney, Regina & William Twiss, North Adelaide, South Australia

Ph/Fax: +61 8 8272 1355 res@adelaideheritage.com

www.adelaideheritage.com

